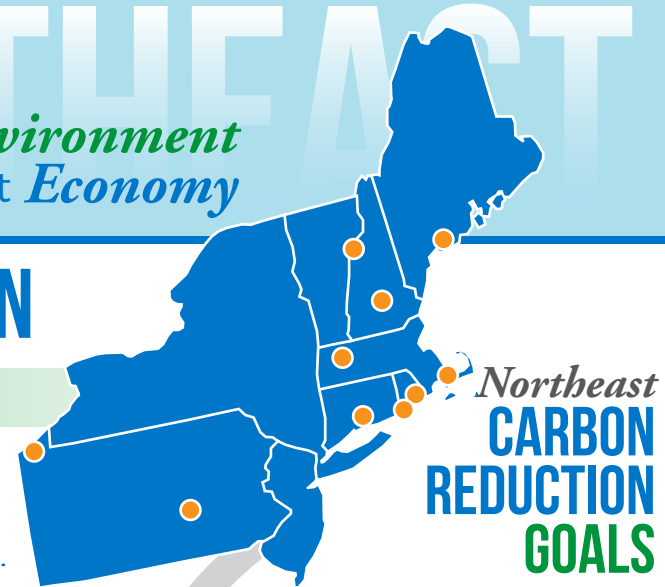
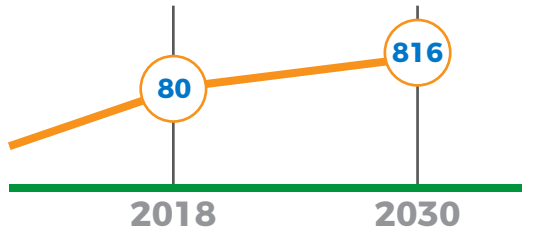


## BIODIESEL: THE NORTHEAST'S CARBON SOLUTION



### Environmental Solutions



**MILLION GALLONS** projected annual biodiesel demand for transportation and heating

One in five existing homes in the Northeast (around 4.5 million) rely on oil heat, using **more than 2.5 billion gallons yearly**.

By 2030, biodiesel will displace **529 million gallons of petroleum** in heating oil.

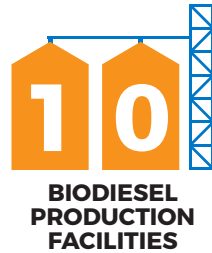
The region's biodiesel and Bioheat® use annually avoids **more than 1.5 million tons of CO2 emissions**, equivalent to **removing 320,000 vehicles from the road or the emissions from annual energy use by 180,000 homes**.

Biodiesel reduces **particulate emissions by as much as 47%** and **carbon emissions by up to 86%**, according to EPA.

### State and City Initiatives

- PA:** B2 in all transportation fuels.
- NY:** Tax credit on Bioheat® blends, up to \$0.20 for B20. B5 in heating oil for Long Island and Westchester county.
- NYC:** B5 in heating oil, increasing to B20 by 2034. B20 now used in all city diesel vehicles and buildings between April and November.
- RI:** B5 in heating oil. Partial exemption on diesel road tax.
- MA:** Biodiesel is an eligible fuel in Alternative Energy Portfolio Standard.
- CT:** B20 implemented when NY, MA and RI establish similar programs.
- VT:** B7 implemented when NY, NH and MA establish similar programs.

### Economic Solutions



- 155M** gallons of production capacity
- 4,950** full time jobs
- \$175M** in annual wages
- \$1.2B** in economic activity

### ABOUT BIODIESEL, RENEWABLE DIESEL AND BIOHEAT®

Data source: Center for Climate and Energy Solutions; LMC International, "Economic Impact of the U.S. Biodiesel Industry," 2019; EIA Short-Term Energy Outlook; EIA "Heating Oil Explained."

- Made from plant-based oils, used cooking oils, and animal fats
- Clean-burning
- Can be used in any diesel engine or heating equipment
- Commercially available nationwide
- Today's solution for heavy-duty trucking, emergency vehicles, bus fleets, and home or industrial heating